

NoDec® AIRSTREAM3

3 Cell-Cycle Alternating Pressure Mattress Replacement

AIRSTREAM3 is a high performance 3 cell-cycle alternating pressure air mattress which represents the continuing evolution of Airwave Technology*.

Designed to prevent pressure injuries in patients at very high risk especially if they have significant mobility restrictions and or when repositioning is difficult, dangerous or inappropriate. AIRSTREAM3 is also the support surface of choice for treating patients with established deep pressure injuries (stages 3 and 4).

AIRSTREAM3 is designed to mechanically replicate the body's natural spontaneous movement in response to unrelieved pressure. Through the use of Airwave Technology, AIRSTREAM3 provides regular and complete pressure elimination to all parts of the body in contact with the mattress. The complete elimination of pressure stimulates reactive hyperaemia in the deep tissues surrounding the vulnerable bony prominences promoting blood and lymph flow to maintain tissue viability in bed confined individuals.

AIRSTREAM3 features a double layer of synchronously inflating and deflating, conjoined air-cells. Vacuum assisted deflation produces 'zero pressure' for more than 25% of the 7.5 minute cycle time. Patients are effectively turned 8 times per hour and therefore the requirement for nursing staff to reposition vulnerable patients for pressure area care is minimal. AIRSTREAM3 is the support surface of choice for patients being nursed in critical care units.

Recommended for nursing patients who:

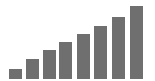
Are immobile, or have multiple trauma injuries or are on a critical / palliative care unit or are in long term community care



Are at increased risk of falls



Are at high to very high risk of developing pressure injuries

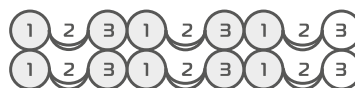
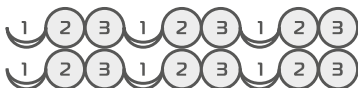


Have existing pressure injuries especially stage 3 and 4 / a previous history of pressure injury



* "Use of the 'Airwave System' to Prevent Pressure Sores in Hospital" Prof. A N Exton-Smith, Lancet, 1982, 1288-1290.

3 CELL-CYCLE:



Clinically Proven Therapy

- 3 in 1 cell-cycle doubles the number of supporting cells enabling deflating cells to totally retract away from body contact
- Conjoined air-cells are retained in place by high frequency welding and always remain correctly positioned beneath the body
- Double layer of air-cells synchronously inflate and deflate in the 7.5 minute cycle
- Vacuum assisted air-cell deflation exhausts all air from deflating cells
- Cyclic pattern of 1 in 3 with complete pressure elimination every 2.5 minutes
- Powerful piston compressor maintains high airflow into the deflated air-cells despite backpressure from the patient's body weight

Patient Safety and Comfort

- Innovative design provides superior patient safety and comfort
- Comfort settings in static and dynamic modes to suit individual patient comfort or clinical requirements
- Cable management system ensures power cable is safely and securely retained off the floor
- Ergonomic patient management unit with touch screen, automatically adjusts cell pressures to patient weight and changes in body position
- Permanently inflated side pods improve patient safety whilst exiting bed or transferring to chair or trolley
- Mattress effortlessly conforms to the profiling of modern electric beds ensuring optimum comfort and performance

Mircoclimate Control

- The optimised moisture vapour transmission rate of the Dartex® cover allows control of the microclimate
- Reduction of both temperature and moisture at the skin/mattress interface decreases the risk of pressure injury as well as enhancing patient comfort

Additional Nursing Support

- Fast deflation through Rapid Release CPR Valve
- Audible and visual alarm provides peace of mind for nursing staff
- Maximum inflate mode quickly produces a firm surface for nursing procedures and increased patient safety for bed exits or transfers to chair or trolley
- Transport mode facilitates bed movement without patient risk
- Easy to use touch screen display and control
- Clearly marked foot end to aid correct positioning of patient
- Static mode automatically reverts to alternating mode after 30 minutes
- Control panel automatically locks out after 1 minute of inactivity
- V-Lock system prevents the power cord from being accidentally unplugged

Improved Infection Control




- Waterproof, multi-stretch, vapour permeable, Dartex® covers provide microclimate control at the skin/mattress interface and protect against the ingress of body fluids
- High frequency welding to provide an additional barrier to fluid entry
- The ultra soft Dartex® covers have an anti-microbial agent incorporated in the polyurethane coating as an added protection against bacterial contamination and can be laundered at high temperatures
- 360° zip protected by a generous waterfall flap allows covers to be easily removed for infection control and laundering
- Smooth covers reduce shear and friction and allow for easy wipe down with disinfectant
- Dual layers of welded conjoined cells can be easily wiped down and disinfected

Technical Specifications

Number of cells	18
Mattress sizes	1900 x 880 x 250 mm 1900 x 800 x 250 mm
Max. patient weight	250 kg
Mattress material	Cells: Polyurethane Cover: Dartex® two-way stretch Polyurethane coated Nylon
Pump unit dimensions	400 x 160 x 250 mm
Mattress weight	11 kg
Pump weight	6.8 kg
Classification	Class B Medical Device / Class II
Mattress - flammability rating	Complies with BS7175 ignition source 0, 1 and 5
Power unit - flammability rating / ingress protection	UL 94 V-0 / IP42
Power supply / power consumption:	230 V~ ±10%, 50 / 60 Hz 20 W max

Distributed by:

www.roberlimited.com

 Tel. +44 (0) 1246 245404
 info@roberlimited.com
 @RoberLtd



© 2016 NoDec® and NoDec® AIRSTREAM3 are registered trademarks of Rober Limited

NoDec®
AIRSTREAM3

 **Manufactured In Britain**

Rober Limited, Wheatbridge Road, Chesterfield, Derbyshire, S40 2AB, UK.

ROBER

Rober Ltd reserves the right to make technical changes.